



Exposition Light Rail Transit Project



**Downtown & Mid-Corridor
Project Status Update Meeting
Holman United Methodist Church
Thursday, October 28, 2010**

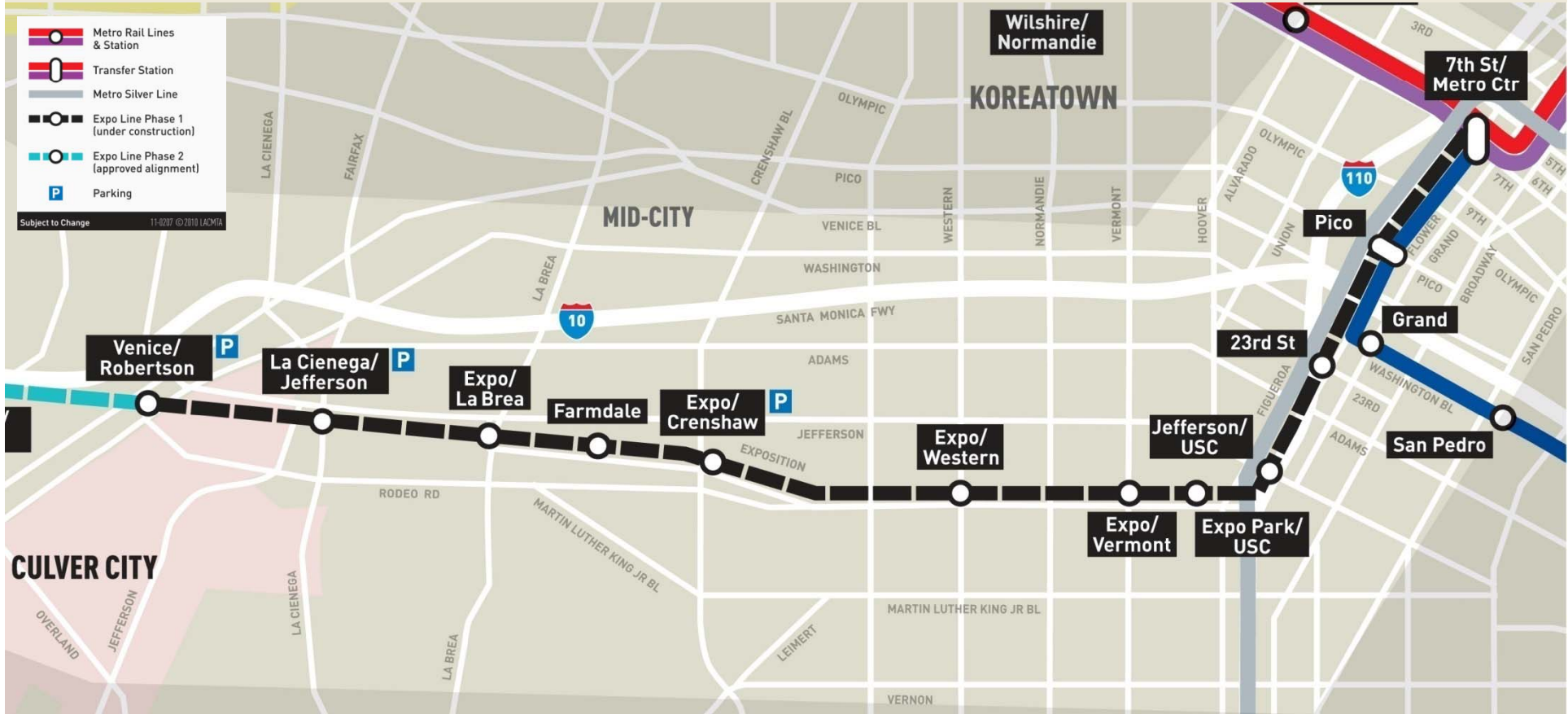
Phase 1 from Downtown Los Angeles to Culver City:

- 8.6 mile corridor
- 12 Stations, 2 Shared with Blue Line
- 1,500 Spaces at 3 Park and Ride Lots
- Estimated Daily Riders in 2020: 27,000
- Estimated Travel Time: 30 minutes
- Estimated Cost: \$899 million
- Construction Completion: 75%
- Partial Opening: 2011
- Culver City Opening: 2012



Expo Line Transit Project

Phase 1 Alignment Map



Expo Line Transit Project

Segment A - Station Renderings



www.simulator.com

Daytime Construction Activities in Segment A

Installation of street lighting and traffic signals along the alignment, from Washington Boulevard to Vermont Avenue

Sidewalk reconstruction along Flower Street and Exposition Boulevard

Street restoration commenced in March with intersection reconstruction, and will continue through December 2010

Final striping and signage installation will begin in January 2011



Sidewalk reconstruction (t) and installation of Bollards (b) at Trousdale Parkway

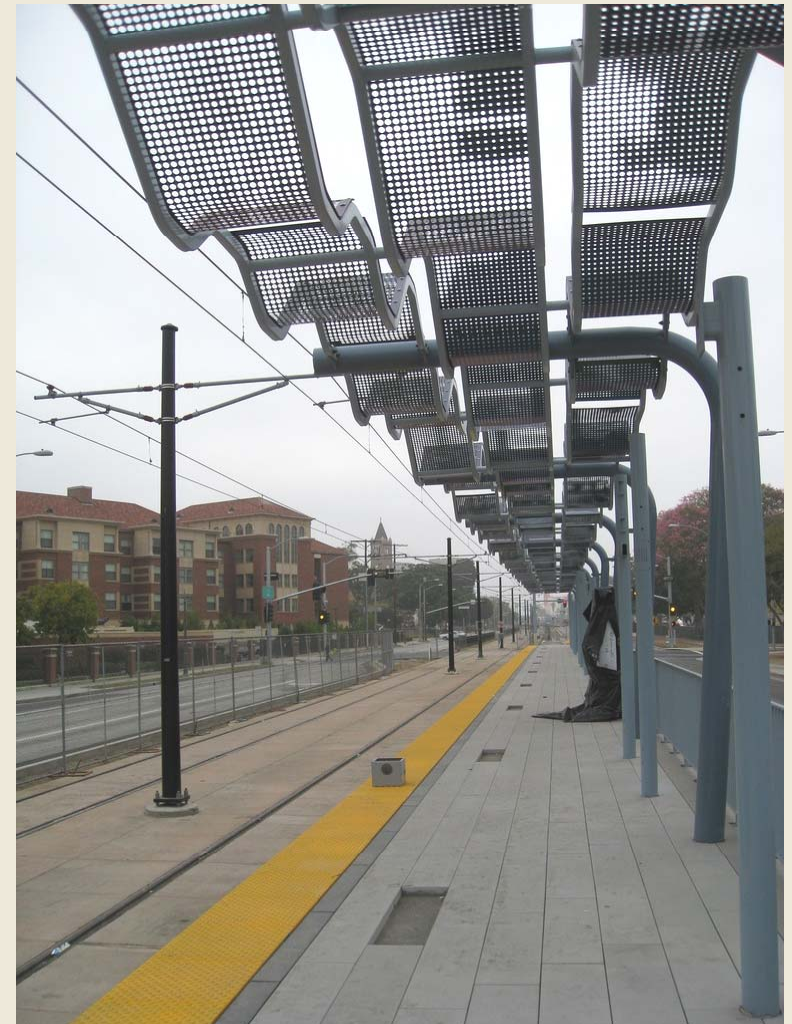
Daytime Construction Activities (cont.)

Construction of 23rd Street, Jefferson / USC, Expo Park/USC and Vermont stations, including installation of map cases, lighting, ramp pavers and communications equipment

Finish work on the Flower Street Bridge over the I-110 Freeway, including barrier walls and street lighting

Installation of train control and communications equipment

Finish work at Vermont station (r) including installation of map cases (l)



Nighttime Construction Activities in Segment A

Along Flower Street, from 12th Street to Exposition Boulevard, utility relocation, installation of irrigation lines, and curb and gutter are underway. All of these activities are scheduled to be completed by December 2010.

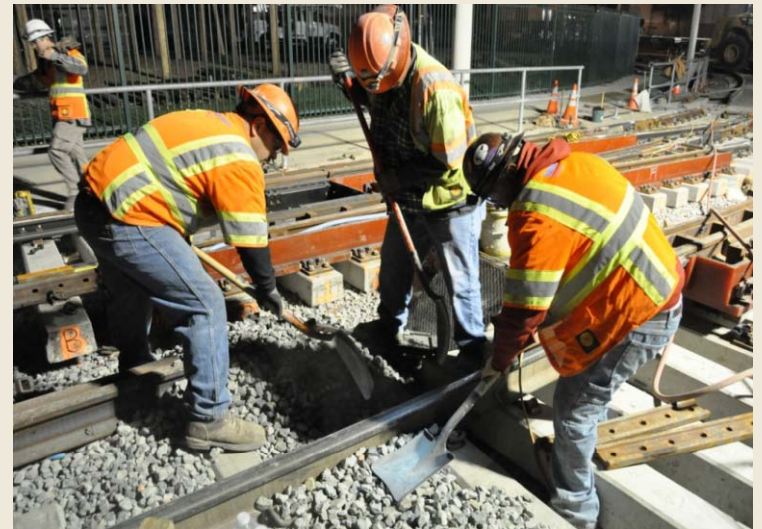
Nighttime work hours, Monday through Friday:

9:00 p.m. - 5:00 a.m.

On Exposition Boulevard, from 37th Street to Vermont Avenue, street reconstruction continues and will be completed by December 2010.

Nighttime work hours, Monday through Friday:

9:00 p.m. - 5:30 a.m.



Nighttime track work for Blue Line Tie-In

Metro Blue Line Tie-In

Over the coming months, construction crews will continue to work at night performing activities necessary to connect the existing Metro Blue Line with the Expo Line, such as the removal and replacement of existing track.

Weekend closures of the Metro Blue Line with bus bridges began in February and will continue intermittently through January for reconstruction of Blue Line tracks, systems and interconnections to the Expo Line. The Blue Line stations of San Pedro, Grand, Pico and the Blue Line portion of the 7th/Metro Center Station will be closed during the bus bridge activity.

Closures will be in effect from Friday at 9:00 p.m. to Monday at 4:00 a.m. and are planned for the following weekends:

- November 5-7
- November 12-14
- November 19-21
- January 21-23

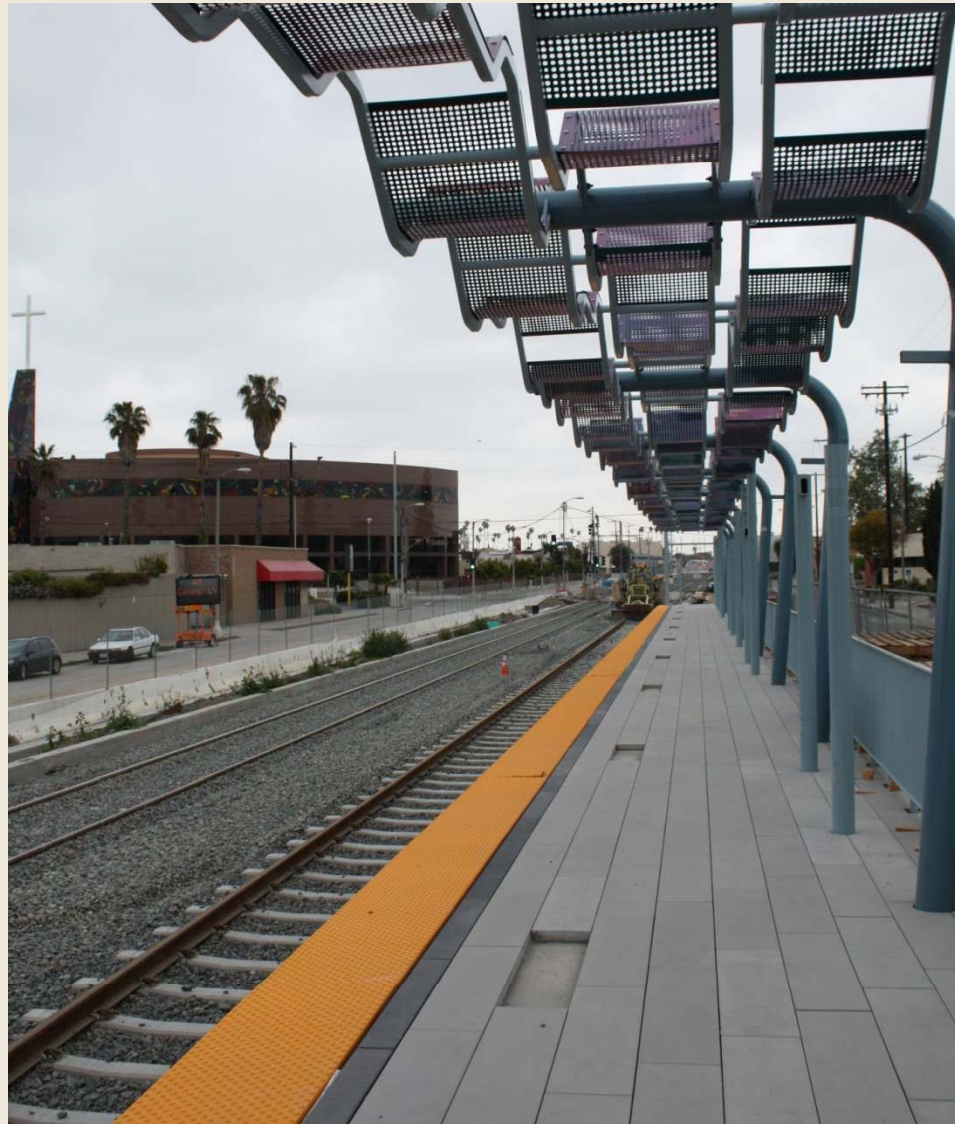


Metro Blue Line

Expo Line Transit Project

Segment B - Station Renderings





Daytime Construction Activities in Segment B

Utility improvements, sewer realignments and street restoration continue from Vermont Avenue to La Brea Avenue

Finish work at the Western and Crenshaw stations, including placement of station furnishings and communications equipment

Installation of track drain and cable ductbank

Installation of curb, gutter, sidewalks and fencing along the ROW

*Installed fencing near
Arlington Avenue*



Nighttime Construction Activities in Segment B

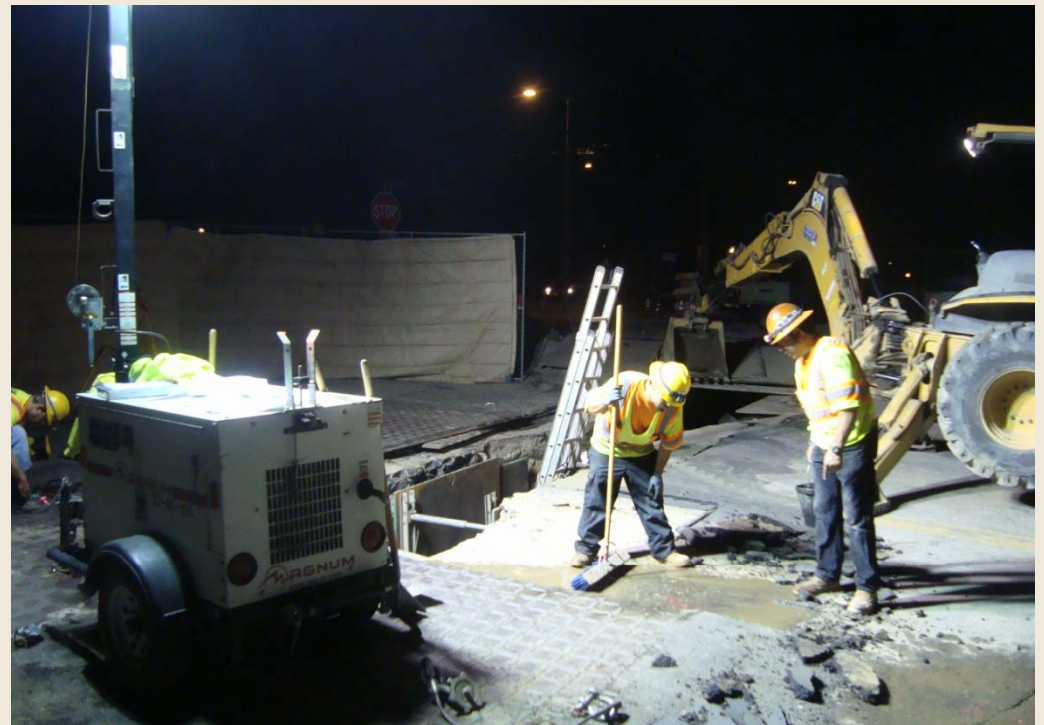
At Farmdale Avenue and Buckingham Road, sewer line work is underway and is expected to continue through December 2010.

At Crenshaw Boulevard, water line installation is underway and will be completed by December 2010.

Nighttime Work Hours Monday through Friday:

9:00 p.m. - 5:30 a.m.

*Night work on
sewer line at
Farmdale Avenue*



Street Reconstruction and Restoration

Street reconstruction and restoration work has been ongoing since August. Demolition work, curb and gutter installation, street repaving and final civil improvements will be completed. Each full intersection closure will last three to nine days, depending on the extent of the work.



Reconstruction/restoration work at Western Ave

Intersections scheduled for restoration:

- Crenshaw Blvd/Exposition Blvd
- Buckingham Road/Exposition Blvd
- Farmdale Avenue/Exposition Blvd

Proposed work hours:

24 hour continuous work during each closure

Types of Mitigation Measures

- Watering trucks are used regularly throughout the alignment
- If noise produced by construction activity exceeds allowable limits, sound blankets and other appropriate measures are implemented
- Advanced notification of traffic detours and delays will be provided
- Street sweepers are used regularly to clear debris from paved streets in the construction zone
- During full intersection closures:
 - Alternative parking arrangements are coordinated with impacted local residents where possible
 - Bus access is maintained via temporarily relocated bus stops

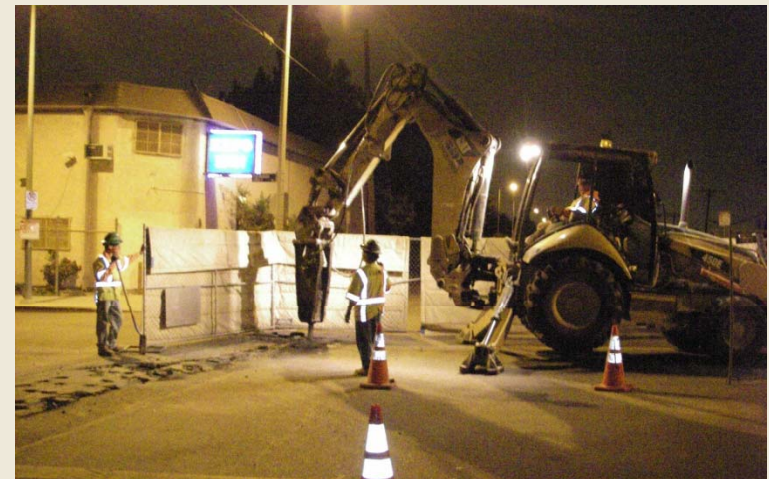


Watering truck near Crenshaw Blvd

Mitigation Measures for Night Work

- On-site noise monitoring is conducted to ensure compliance during noise-generating construction activities.
- Back-up alarms are disabled where practical, and flaggers are used instead to safely direct drivers of trucks and other heavy equipment.
- Sound blankets are installed wherever feasible to buffer construction noise.
- Inspectors are on the site to monitor compliance

*Night work on
sewer line at
Farmdale Avenue*





Community art mural project at the Expo construction field office

- A 24-hour hotline phone number has been set up for all construction inquiries and emergencies:

(213) 922-EXPO (3976)

- Team will respond to all construction inquiries as soon as possible and no later than 48 hours. All emergencies will be addressed immediately.
- Noise complaints will be addressed immediately.
- Construction notices are distributed throughout adjacent communities prior to the start of new construction activities.
- Regular project status meetings, elected briefings and stakeholder updates will continue to be held throughout construction and startup of the line.

Expo Line Transit Project

Reaching Stakeholders Where They Are



E-blast



Help Make It Happen!

Today the Expo Authority Board will consider approval of the Expo Phase 2 project to Santa Monica.

<http://www.buildexpo.org/>

Tired of sitting?
Taking too long?
Want to make a difference?



Website

<http://bit.ly/ExpoFacebook>

<http://twitter.com/ExpoLightRail>



For more information regarding this project, please contact:

Gabriela G. Collins

Expo Community Relations Manager

213-243-5535 or gcollins@exporail.net

Adrienne Sasser-Gardner

FFP Community Relations Manager

310-601-1055 or adrienne.gardner@parsons.com

